



Chaise longue and sun bed with fixed upholstery, directly hand woven onto the structure.

The series Telar also includes an armchair, a low chair, a chair with and without armrests, a two-seater sofa and a pouf.

**Structure:** AISI 316 stainless steel, gloss varnished (reference colours: Mano Lucida wood sample collection); plastic spacers for the chaise longue, plastic wheels for the sun bed.

**Upholstery:** fixed, hand woven with elastic belts of different dimensions covered with a braid in Rope yarn.

For the sun bed, a roller-shaped headrest is also available.

**Roller-shaped headrest:** removable, padding in polyester fibre, insert in stress resistant polyurethane, fixed cover in waterproofed polyester.

**Roller-shaped headrest upholstery:** removable and available in the fabrics Luz, Rope T, Brio, Thea or Wara.

**Notes:**

The structural weave of the chaise longue is available in two different versions, which are produced with elastic belts with two different dimensions.

The structural weave of the sun bed, available in the 1A version only, is produced with elastic belts with two different dimensions.

These products can be used also in interior environments.

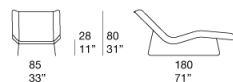
We advise to use a Winter Set protection cover.

**Awards:**

Telar series has been awarded with the RED DOT BEST OF THE BEST 2020.

Telar series has been finalist for the NYCxDESIGN AWARDS 2020.

B157GA - B157GC

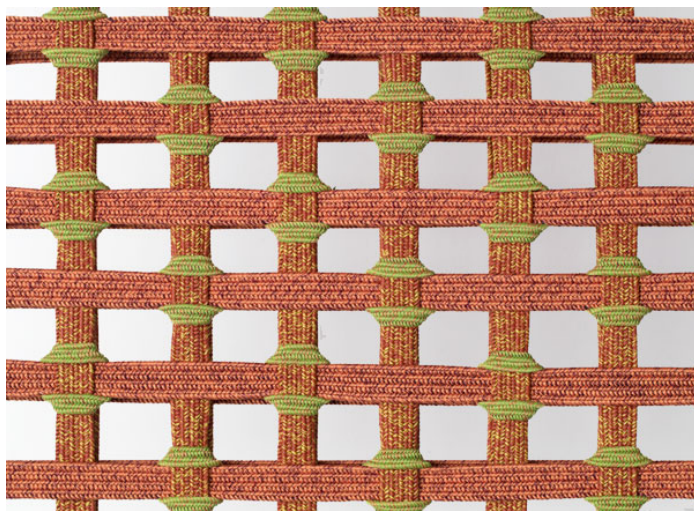


B157SA





intreccio/weave 1A



intreccio/weave 3B