



Hammock made of fabric.

**Structure:** Trame fabric in Rope yarn, fittings in Chain Outdoor tubular knit in colours matching the fabric

**Hooking system:** stainless steel AISI 316.

**Notes:**

The hammock Farniente can be hanged to a specific structure made of AISI 304 stainless steel, matt or gloss varnished (reference colours: Mano Lucida wood sample collection) and provided with base plates for the fixing to weight bearing surfaces.

Loose cushions are recommended for enhanced comfort.

We advise to use a Winter Set protection cover.

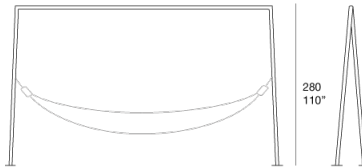
B132AE



400  
157"

125  
49"

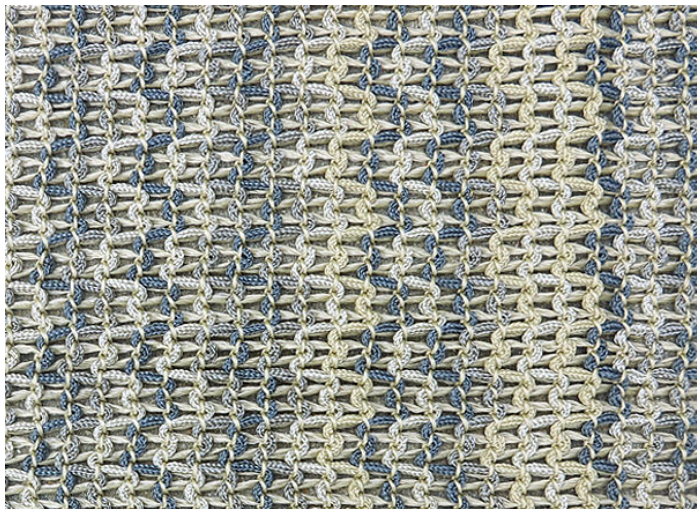
B132SE



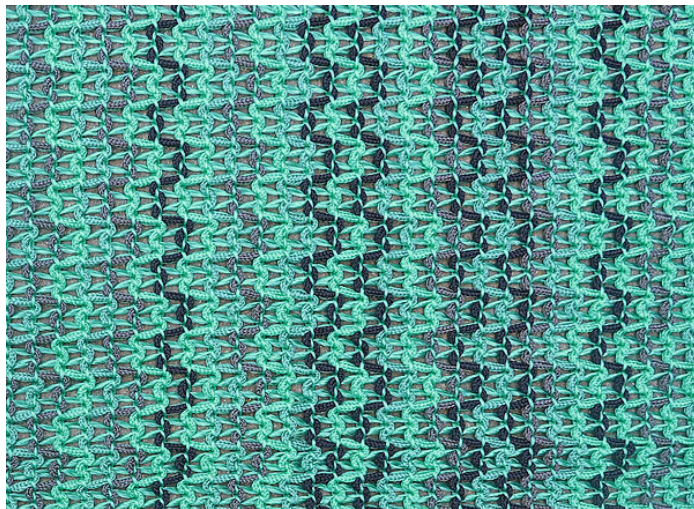
490  
193"

280  
110"

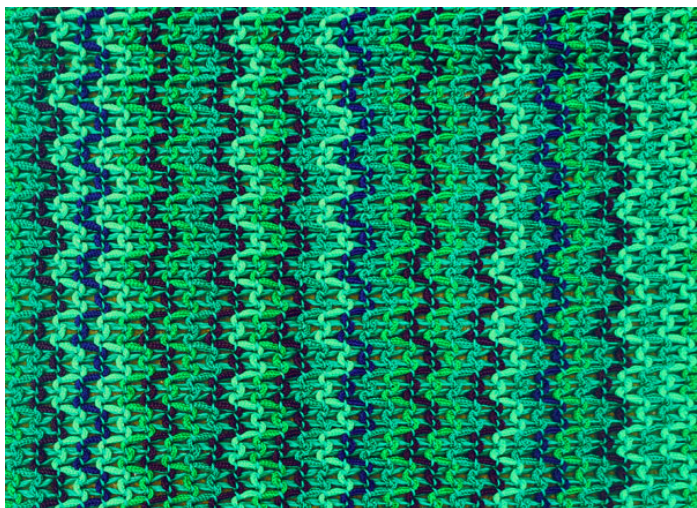
68  
27"



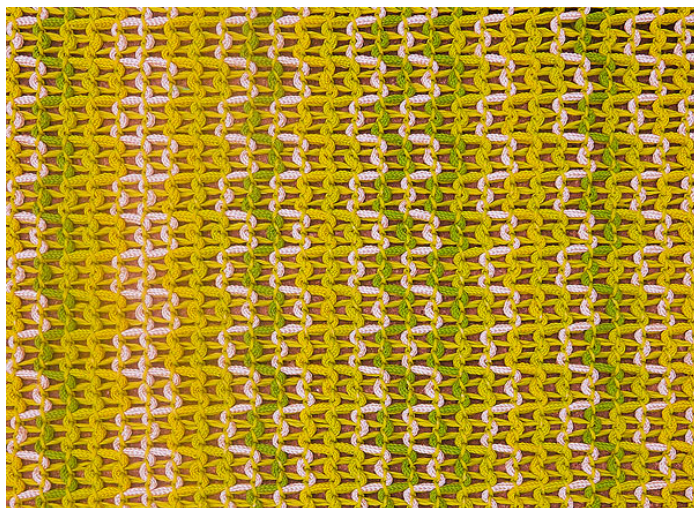
TAM644



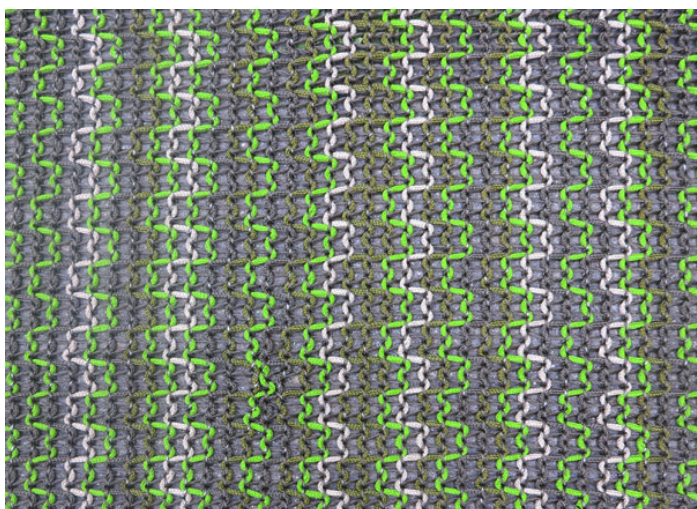
TAM654



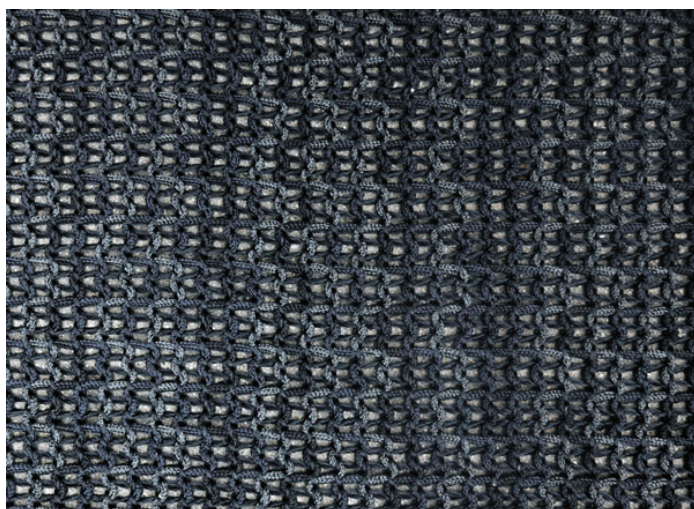
TAM627



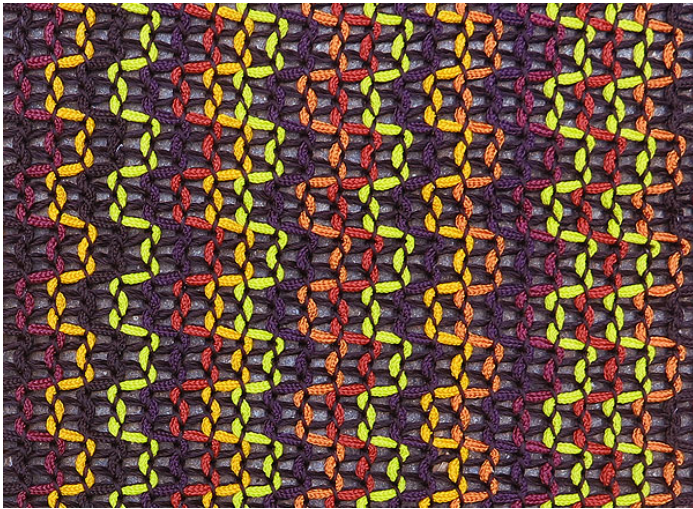
TAM629



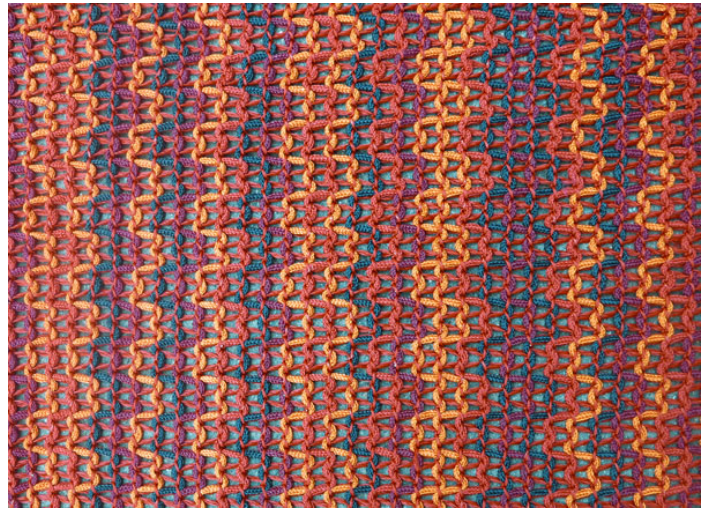
TAM616



TAM638



TAM599



TAM603