

# AMAR & SHAMS

---

TECHNICAL SHEET



JWANA HAMDAN  
MADE IN ITALY

# AMAR & SHAMS

ENGLISH

## LOW TABLES

Amar and Shams, meaning "Moon and Sun" in Arabic, are two coffee tables with an essential shape and a solid presence that evoke a nomadic way of living. The top is crafted from Okumè marine plywood, the surface is manually applied by experts artisans, making each piece unique.



Amar & Shams coffee tables are suitable for outdoor use. The legs made in iroko wood support a round top in okumè marine plywood with a textured surface. The top coating is composed of water-based polymers, sunflower oil, natural inerts and recycled materials, applied by hand by skilled craftsmen.

### Structure (1)

Legs are made in iroko wood treated with a water-based oil for a greater protection against UVA rays and colour uniformity. The feet ends with thermoplastic tips.

### Top (2)

The top is made of okumè marine plywood, a material that has excellent resistance and durability in conditions of humidity and salinity. The top has CARB certification.

### Top Finishings

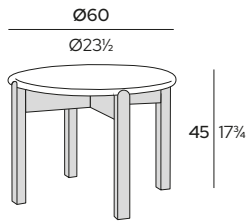
The coating of each tabletop is manually applied by craftsmen highly specialized in artistic and decorative works, creating unique products. The surfaces are made with polymers derived from sunflower oil, natural aggregates of sand and special quartz from the Italian certified recycling circuit. All the surfaces are certified non-toxic, free of epoxy resins, cement, lime and gypsum, resistant to UVA rays and suitable for food contact.

*Images of the colours of fabrics and collection materials are to be considered purely indicative and can in no way constitute the main reference for the formulation of orders. Any disputes regarding objective and possible differences between colour samples or between print and web reproductions and the final product will not be considered valid.*

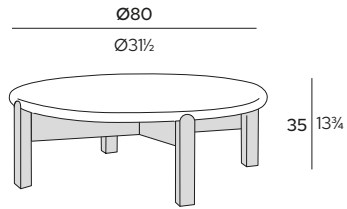
## LOW TABLES

### DIMENSIONS

cm | inch



AMRD60-K-P  
AMAR LOW TABLE Ø60 CM



SHMD80-K-P  
SHAMS LOW TABLE Ø80 CM

### MATERIALS AND FINISHINGS

#### Tabletop Surface

*Okumè Marine Plywood*



P01  
GOLD



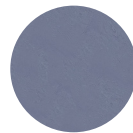
P02  
DARK GREY



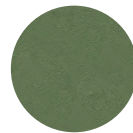
P03  
OFF-WHITE



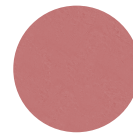
P04  
CORTEN



P05  
LIGHT BLUE



P06  
GREEN



P07  
PINK



PW01  
WARD

#### Structure

*Wood*



K1  
IROKO NATURAL

### ADDITIONAL ITEMS

#### Protective Cover



PC1  
BLACK



PC2  
SAND



JWANA HAMDAN  
MADE IN ITALY

**JWANA HAMDAN**  
a brand of Tecnopiù srl  
via Achille Mapelli, 11A  
20900 Monza MB, Italy